



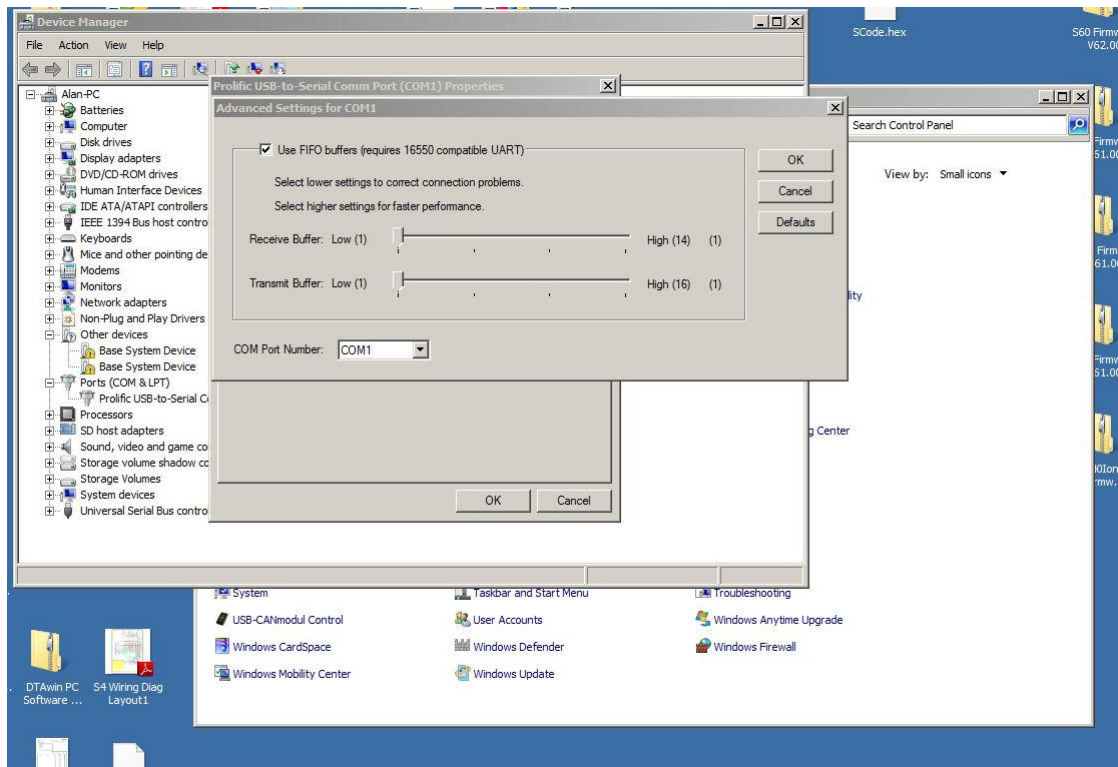
DTA Race Electronics
Unit 10, Boston Court
Kansas Ave
Manchester
M50 2GN
England

Tel: (+44) (0)161 877 1419
Fax: (+44) (0)161 877 7086
Email: office@dtafast.co.uk
Website: www.dtafast.co.uk

USB Driver Settings

After installation of the USB driver as per the instructions, attach the converter.

Open Windows Control Panel/System/Hardware/Device Manager/Ports Com and LPT. Double Click on the USB-> Com Converter/Port Settings/Advanced and set the COM port number (usually 1) and FIFO's as below. Reboot the computer after doing this.



If reliable communications are not achieved, download the latest drivers from www.dtafast.co.uk/downloads .Choose PC Software. Click on PL2303_Prolific_DriverInstaller_v1.6.0.zip to download it. Unzip and install it. Reset the above details (especially the COM port number) as this will have changed. Reboot the computer after doing this. If when using Windows Vista or Win 7 you have problems use the PL2303_Prolific_WDMDriverInstaller_v1.6.1.zip instead and try again.

Make sure you always use the same USB port in your PC as using a different one can cause windows to use a different driver.